

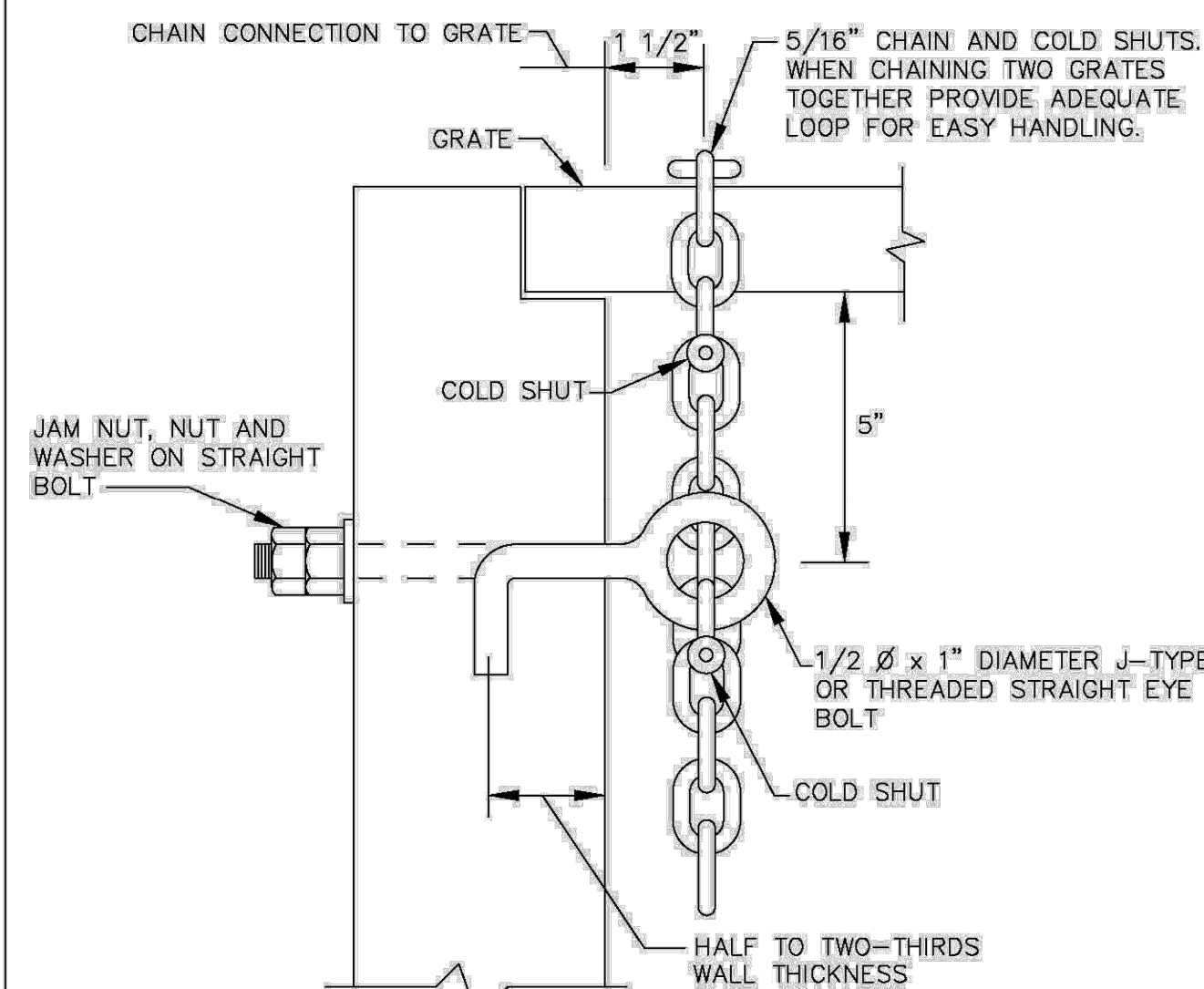
REVISIONS		ENGINEERING DIVISION CITY OF POMPANO BEACH	COVER FOR MANHOLES AND INLETS
BY	DATE		
A.S.	12/22		
SCALE: N.T.S.			DATE: DEC 2022 DWG. NO. 409-1



ENGINEERING STANDARDS 2025			
REVISIONS		ENGINEERING DIVISION CITY OF POMPANO BEACH	CAST IRON GRATES
BY	DATE		
SCALE: N.T.S.		DATE: JUNE 2022	DWG. NO. <b>410-1</b>

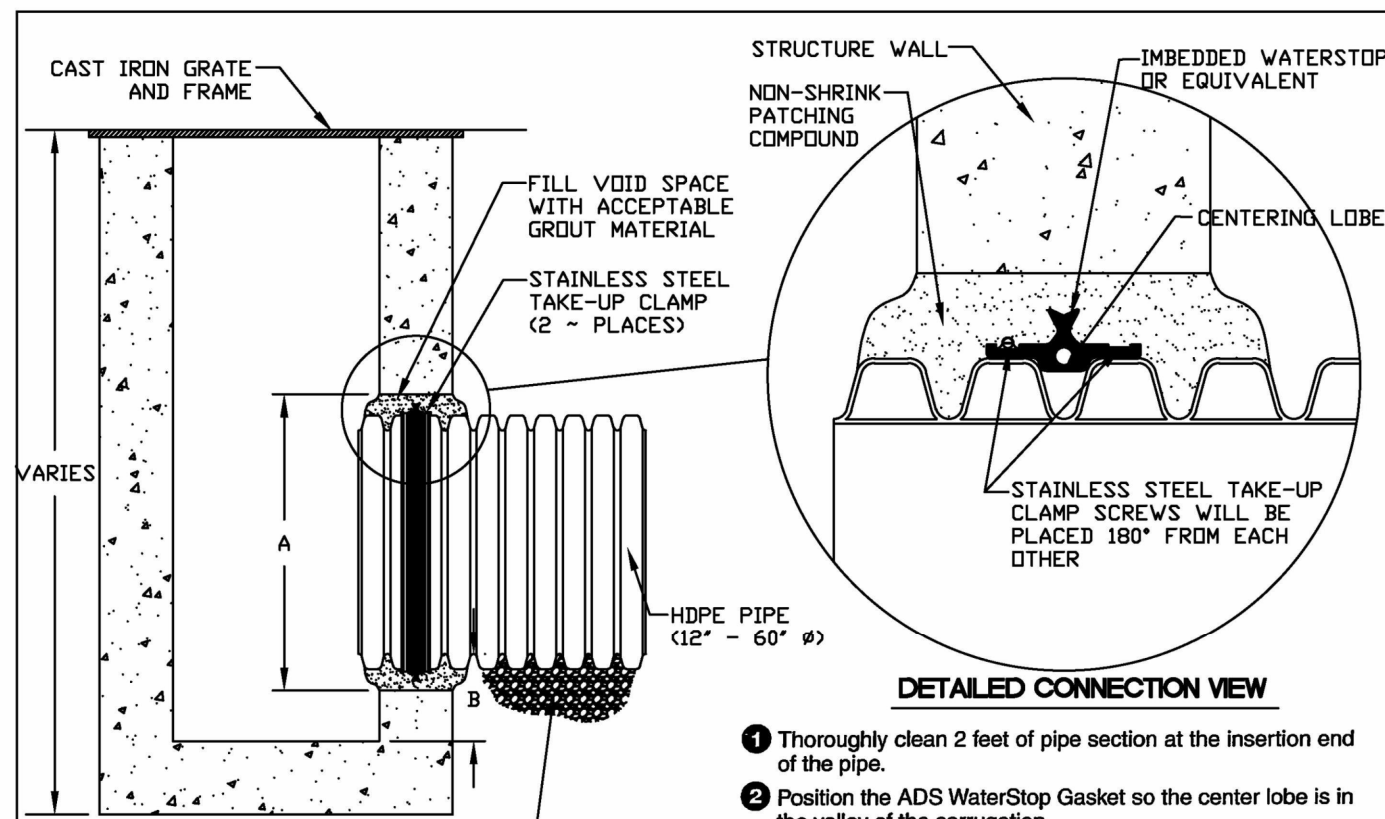


ENGINEERING STANDARDS 2025				
REVISIONS:		ENGINEERING DIVISION CITY OF POMPANO BEACH	CAST IRON FRAME FOR MANHOLES	
BY	DATE			
SCALE: N.T.S.		DATE: JUNE 2022 DWG. NO. 411-1		



## EYE BOLT AND CHAIN FOR LOCKING GRATES

REVISIONS		ENGINEERING DIVISION CITY OF POMPANO BEACH	EYE BOLT AND CHAIN
BY	DATE		
SCALE: N.T.S.		DATE: JUNE 2022	DWG. NO. 413-1

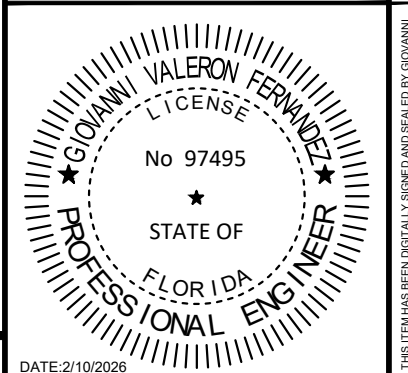


**DETAILED CONNECTION VIEW**

- Thoroughly clean 2 feet of pipe section at the insertion end of the pipe.
- Position the ADS WaterStop Gasket so the center lobe is in line with the center of the corrugation.
- Place the stainless steel take-up clamps in the grooves on each side of the center lobe, insure that both clamps lie on the same side of the center lobe.
- Position the take-up clamps 180° from each other. Using a torque ratchet or torque wrench, gradually tighten both clamps until each clamp is 60 lbs./sq. inch. Do not over-tighten.
- Apply a good quality concrete bonding agent to the structure opening.
- Insert pipe into the structure opening. Make sure that the ADS WaterStop is fully within the plane of the structure's wall. If mortaring in place, apply and compact non-shrink grout around the ADS WaterStop. After the grout has cured, remove opening, taking care to fill the voids. Make sure that the ADS WaterStop Gasket does not contact the bare structure walls.
- Remove the ADS WaterStop take-up clamps and attempt to permit complete flow around the pipe and ADS WaterStop. Thoroughly vibrate all around the pipe and ADS WaterStop. Remove the ADS WaterStop take-up clamps and remove any trapped air.
- Allow concrete or mortar to fully cure before testing or backfilling. If the system is to be tested, testing should be done according to the test methods and procedures in all recommendations and requirements of the test system being tested. Plug any vent holes in the M-12 pipe prior to testing.
- Backfill the M-12 pipe following recommendations in ADS Product Note 3.115, *Installing M-12 Storm, Sanitary Sewer*

PIPE SIZE	PIPE OD	CNO	7" MIN. HOLE Ø	MIN. DISTANCE PIPE INVERT TO STRUCTURE
INCH	A-PROFILE	H-PROFILE		
12	14.5	14.2	19.0	3.7
15	17.5	17.8	23.00	4.0
18	21.2	21.5	26.50	4.8
24	27.8	28.4	33.50	4.5
30	35.1	35.3	40.50	5.2
36	41.1	41.4	47.00	5.5
42	47.7	48.0	53.00	5.7
48	53.6	54.0	59.00	5.7
60	64.3	64.7	71.00	6.4

ENGINEERING STANDARDS 2025			
REVISIONS		ENGINEERING DIVISION CITY OF POMPANO BEACH	WATER STOP SEAL
BY	DATE		
TCW	04-08		DATE: MAY 2022 DWG. NO. 414-1
		SCALE: N.T.S.	



KHA PROJECT 043175014	DATE 12/1/2025	SCALE	AS SHOWN
DESIGNED BY	GVN	DRAWN BY	E/A
CHECKED BY	GVN		

## PAVING GRADING & DRAINAGE DETAILS

**MODERA POMPANO  
BEACH  
PREPARED FOR  
MCRT INVESTMENTS LLC  
POMPANO BEACH  
FLORIDA**

SHEET NUMBER  
**C-306**